

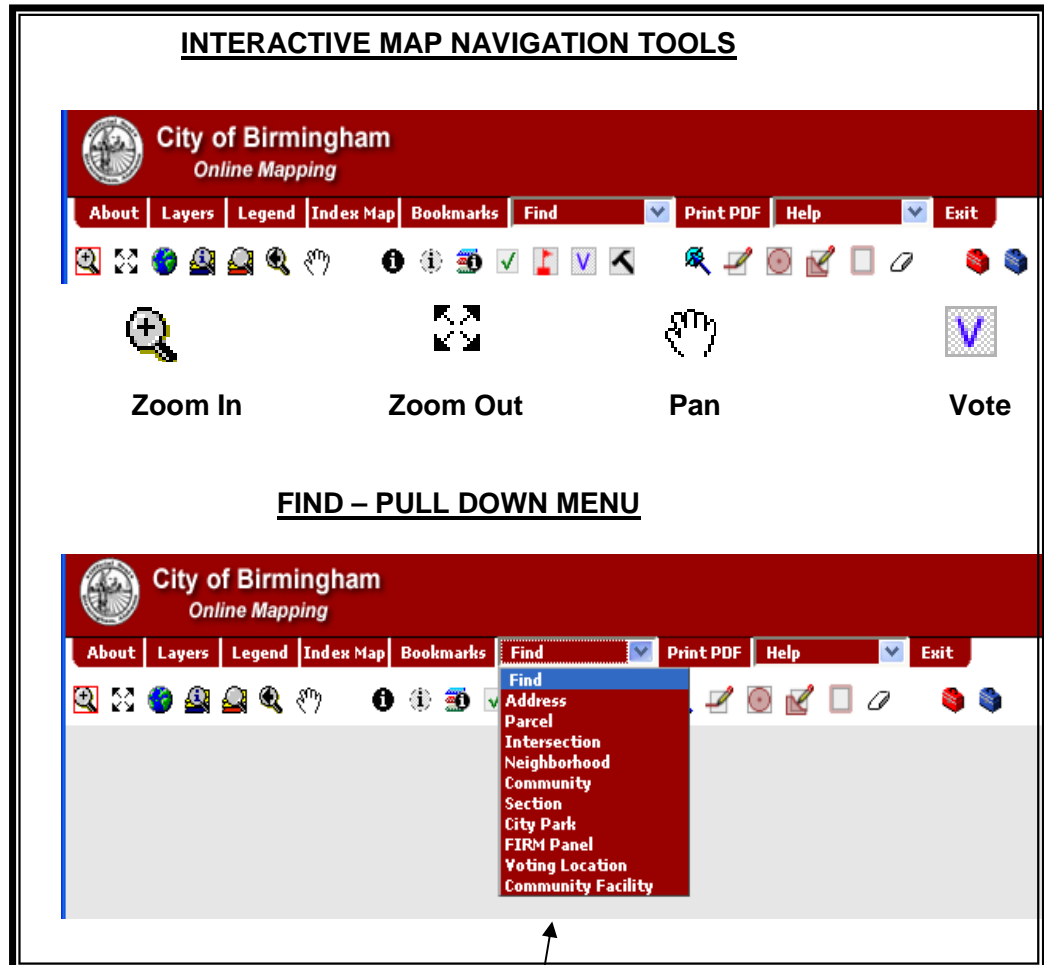
FIND VOTING LOCATION USING GIS WEB

NOTE: Please use your last voter registered address. This is the address that determines where you will be allowed to vote.

POP UP BLOCKER MUST BE DISABLED

Figure 1

The interactive Map Navigation Tools can be used to move around the map, zoom in, zoom out or display Voter Precinct location.



I. FIND ADDRESS

-To find your voting location, you must first find your address.

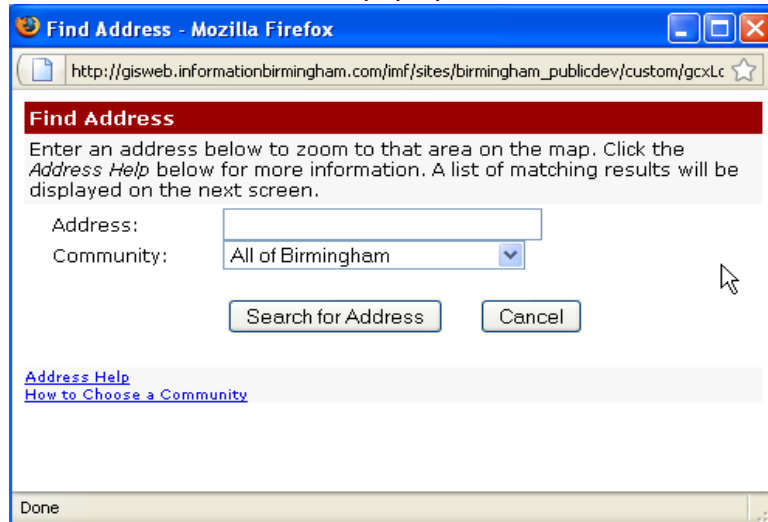
Your address can be found by using the *Find Pull Down Menu*.



There are two options for finding an address:

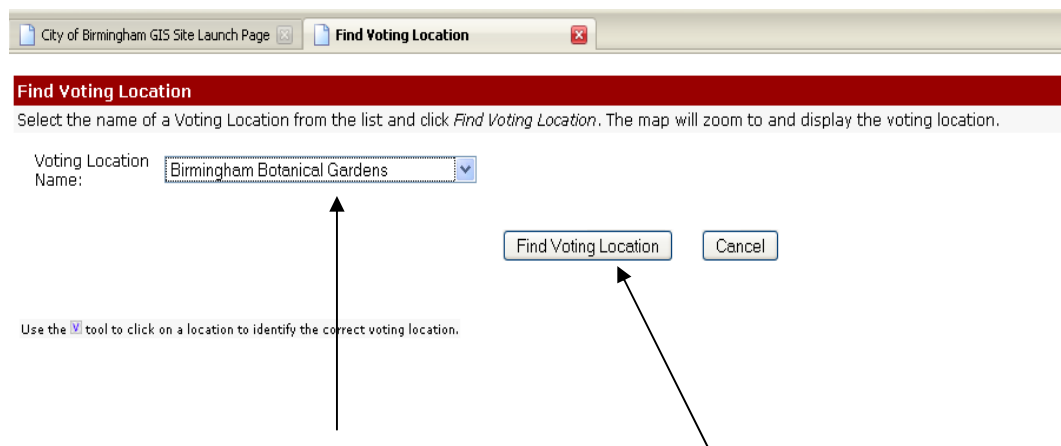
- (A) By Address
- (B) By Neighborhood

A. OPTION “A” – FIND ADDRESS

1. Select Address from the Find Pull Down Menu
2. A Find Address window will pop up.



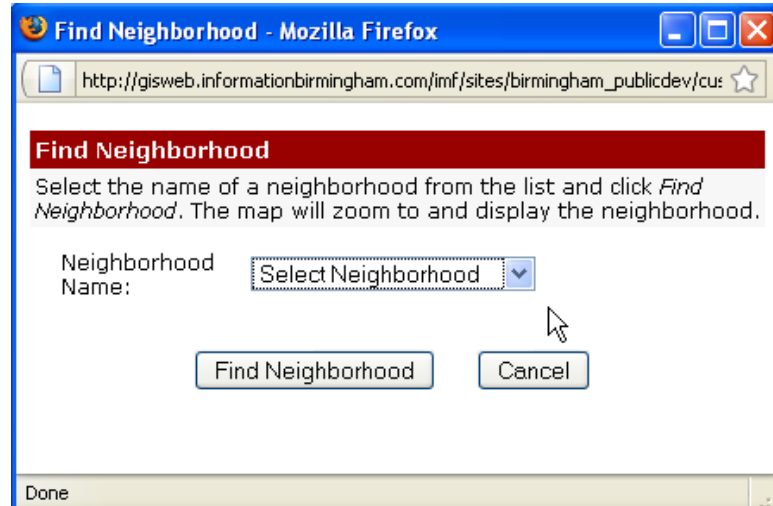
3. Type your address in the Address box and click on Search for Address. The map application will search for the address. The map will either zoom to the address or give you a list to select from.
4. If a list is displayed, select your address from the list and the map will zoom to your street location.
5. To find your voting location, click on the  **-Vote Tool** located on the toolbar.
6. Click on or near the parcel that contains your address. Note: If you cannot clearly see your location, you may need to zoom in closer by using the  **- Zoom in Tool** located on the toolbar.
7. Your voting location will pop up on the far right side of the screen with a photo of the location and its address. Under the photo is the option to **Find Voting Location**. Click on this option, and a Find Voting Location window will pop up.






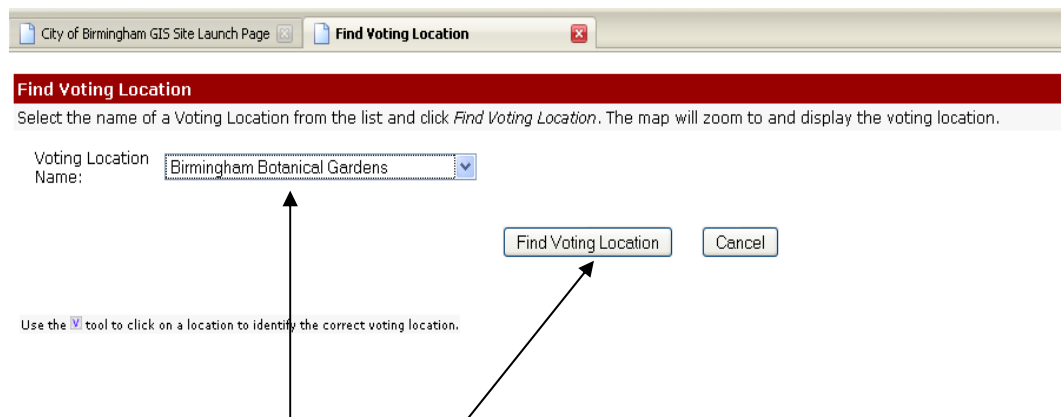
8. Select your voting location from the Voting Location Name Pull Down Menu.
9. Click on the “Find Voting Location” button and the map will zoom to the voting Location.

B. OPTION “B” – FIND NEIGHBORHOOD

1. Select Neighborhood from the Find Pull Down Menu
2. A Find Neighborhood window will pop up.



3. Select your neighborhood from the Neighborhood Name Pull Down and click the Find Neighborhood Button.
4. The map will zoom to the selected neighborhood. Neighborhood boundaries are highlighted in turquoise.
5. To find your address, you use the  - **Zoom in Tool** or  - **Pan Tool** located on the toolbar.
6. To find your voting location, click on the  - **Vote tool** located on the toolbar.
7. Click on the parcel that contains your address
8. Your voting location will pop up on the far right side of the screen with a photo of the location and its address. Under the photo is the option to **Find This Location**. Click on this option, and a Find Voting Location window will pop up.

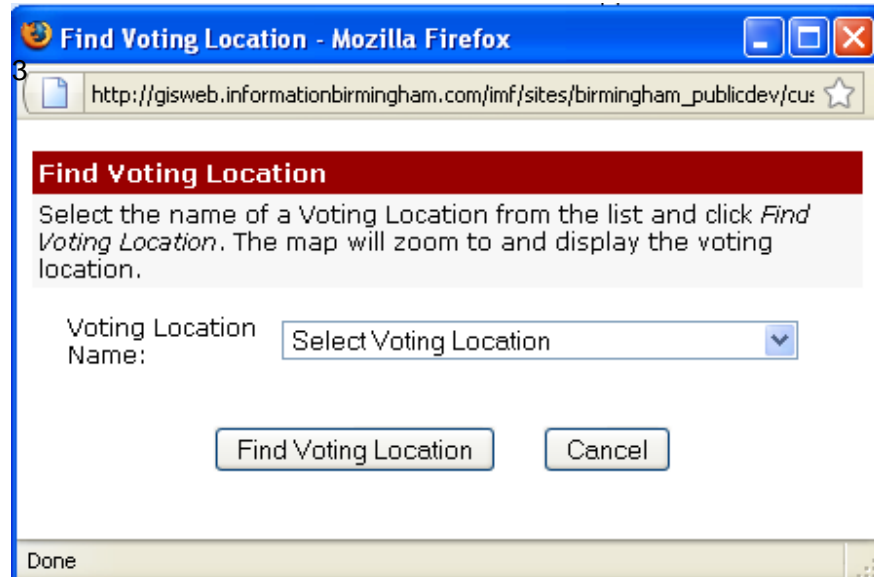


9. Select your voting location from the Voting Location Name Pull Down Menu.
10. Click on the “Find Voting Location” button and the map will zoom to the voting Location.

II. FIND VOTING LOCATION

If you know the name of your voting location but need to find its location:

1. Select Voting Location from the Find Pull Down Menu
2. A Find Voting Location window will pop up.



3. Select voting location from the Voting Location Name Pull Down Menu
4. Click on Find Voting Location
5. The map will zoom to the voting Location.

This tool is intended solely as an aid to help find your voting location. This tool gives the correct information for the place that is selected on the map. If you click the wrong location on the map, the voting information may be incorrect. If you are still not sure, call the Jefferson County Board of Registrar's Office for clarification. The telephone number is (205) 325-5311.